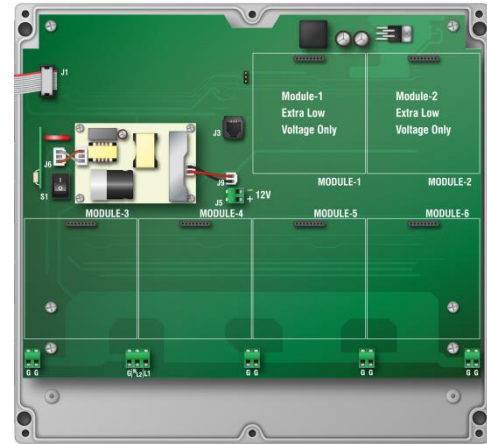
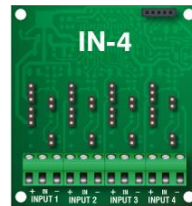
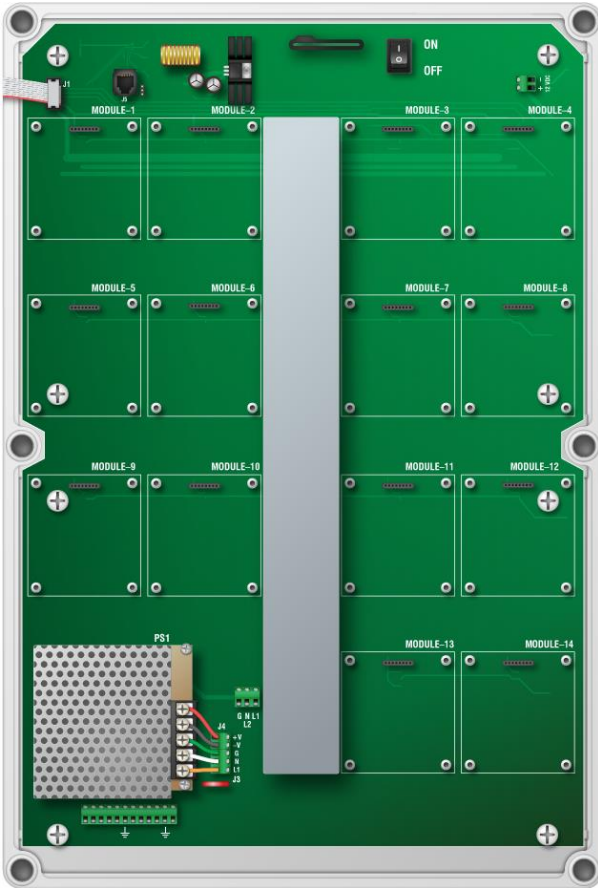


Layout and ratings



Incoming power

- ◇ 85 to 264 VAC, 50/60 Hz

Alarm relay

The alarm relay connection is on the inside of the cover.

- ◇ 0.4 A at 125 VAC; 2 A at 30 VDC, resistive load
- ◇ 0.2 A at 125 VAC; 1 A at 30 VDC, inductive load

Actuator Module (ACT-1)

Each Actuator Module has one open and one close relay. There is a connection for potentiometer feedback.

- ◇ 15 A at 120/230 VAC, general-purpose (resistive)
- ◇ 1/2 HP at 120 VAC, 1 HP at 230 VAC

Input Module (IN-4)

Each Input Module has connections for four sensors.

Relay Module (RM-4)

Each Relay Module has four general-purpose relays.

- ◇ 15 A at 120/230 VAC, general-purpose (resistive)
- ◇ 1/2 HP at 120 VAC, 1 HP at 230 VAC

Variable DC Module (VDC-4)

Each Variable DC Module has four 0 to 10 V DC outputs.

- ◇ 0 to 10 VDC, 2K Ω load



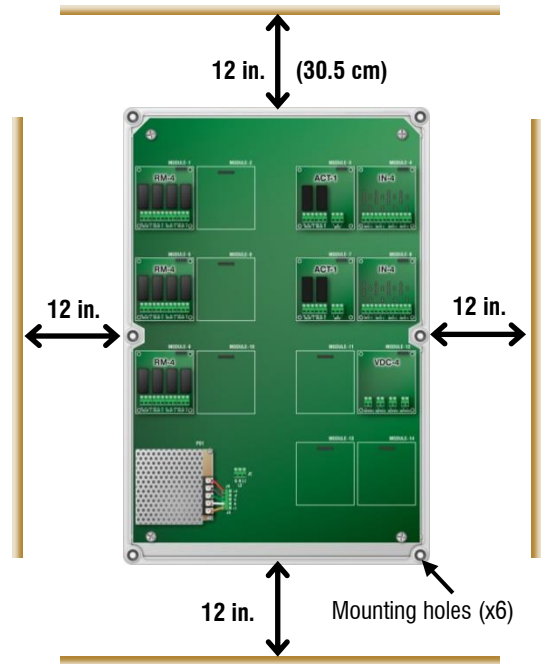
- ◇ You can connect more than one piece of equipment to a relay as long as they are the same type (for example, two fans) and the total current draw and horsepower does not exceed the relay's limit.
- ◇ The maximum wire gauge for all terminals is 12 AWG, solid or stranded.



To download the complete user manual, scan this special code with your mobile device using a QR reader. You can also visit

Mounting guidelines

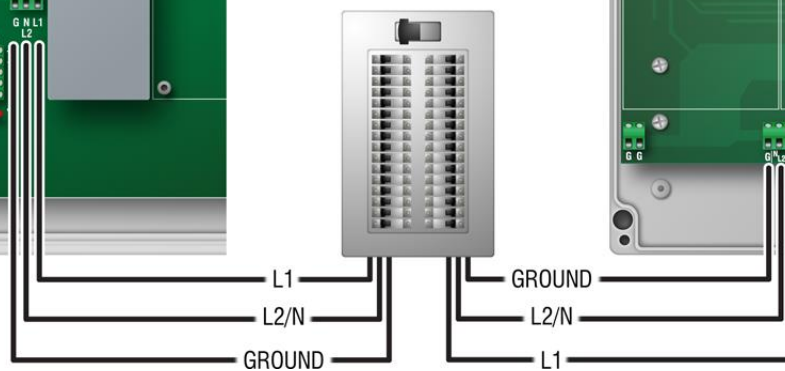
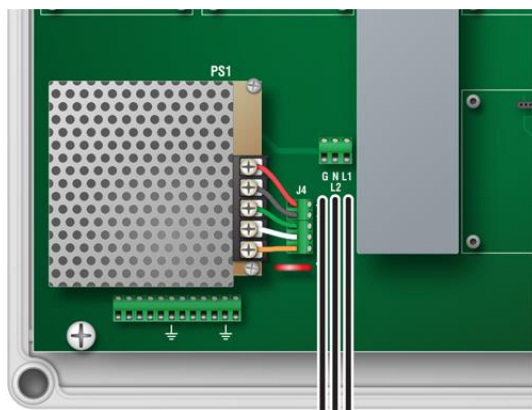
- ◆ Mount the control on a sheltered, vertical surface.
- ◆ Mount the control with the electrical knockouts facing down.
- ◆ Mount the control away from sources of moisture and heat.
- ◆ Leave at least 12 inches of space around the enclosure



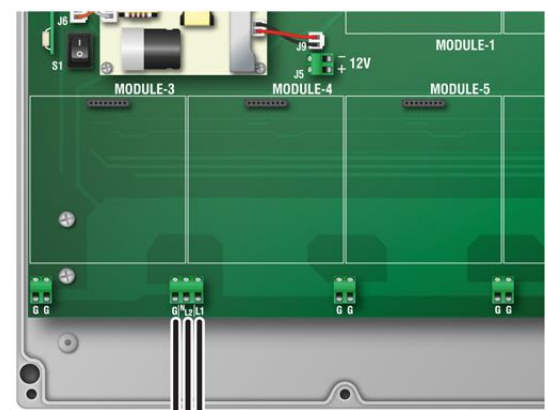
Incoming power

You can connect AutoFlex controls to 85 to 264 VAC, 50 or 60 Hz power. Connect the incoming power source as shown below.

AutoFlex



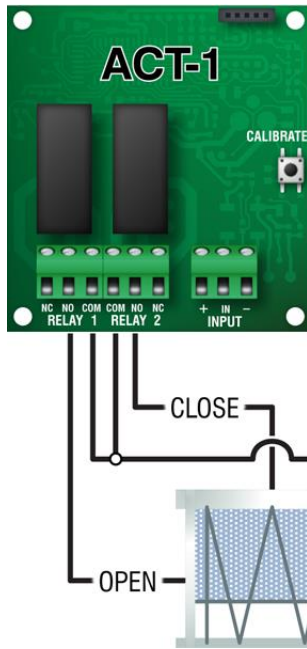
AutoFlex Mini



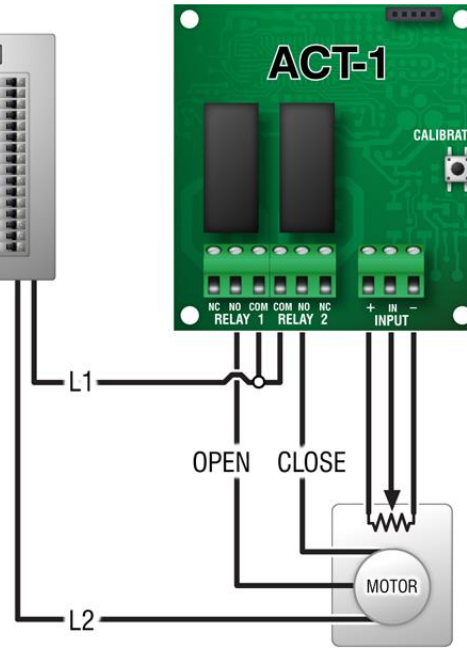
Actuator Modules

Each Actuator Module (**model ACT-1**) has one OPEN and one CLOSE relay for connecting actuators or curtain machines. There is a connection for potentiometer feedback.

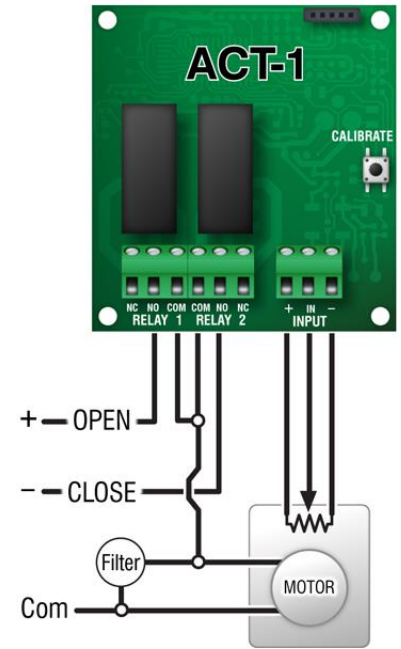
Curtain machines



AC powered actuators

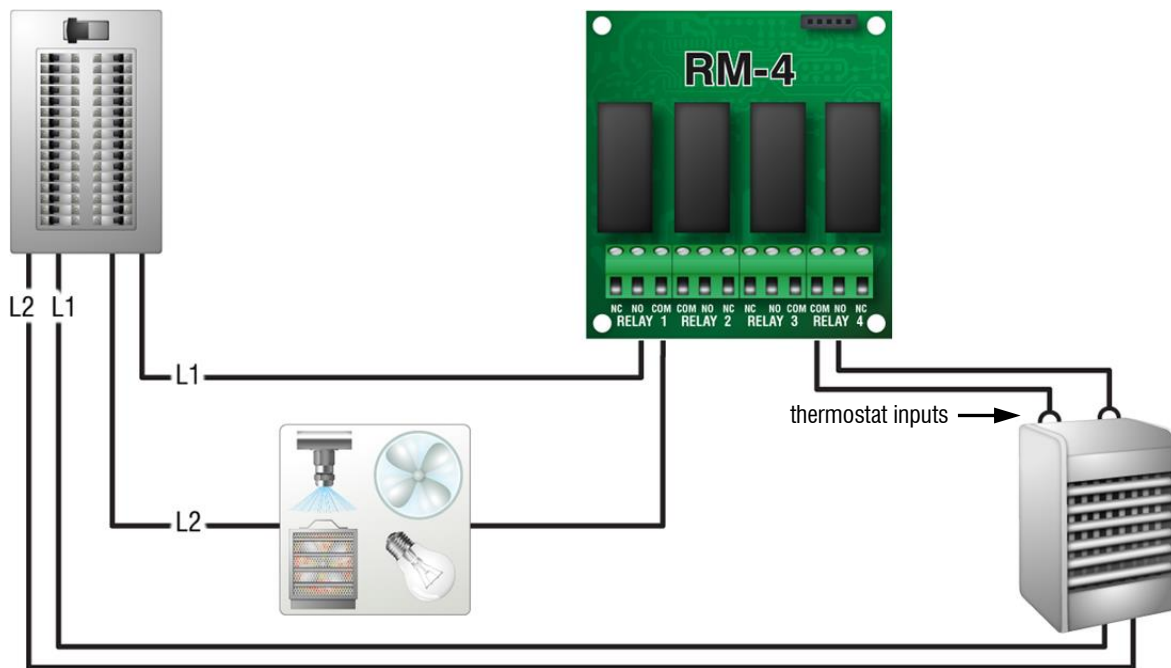


DC powered actuators



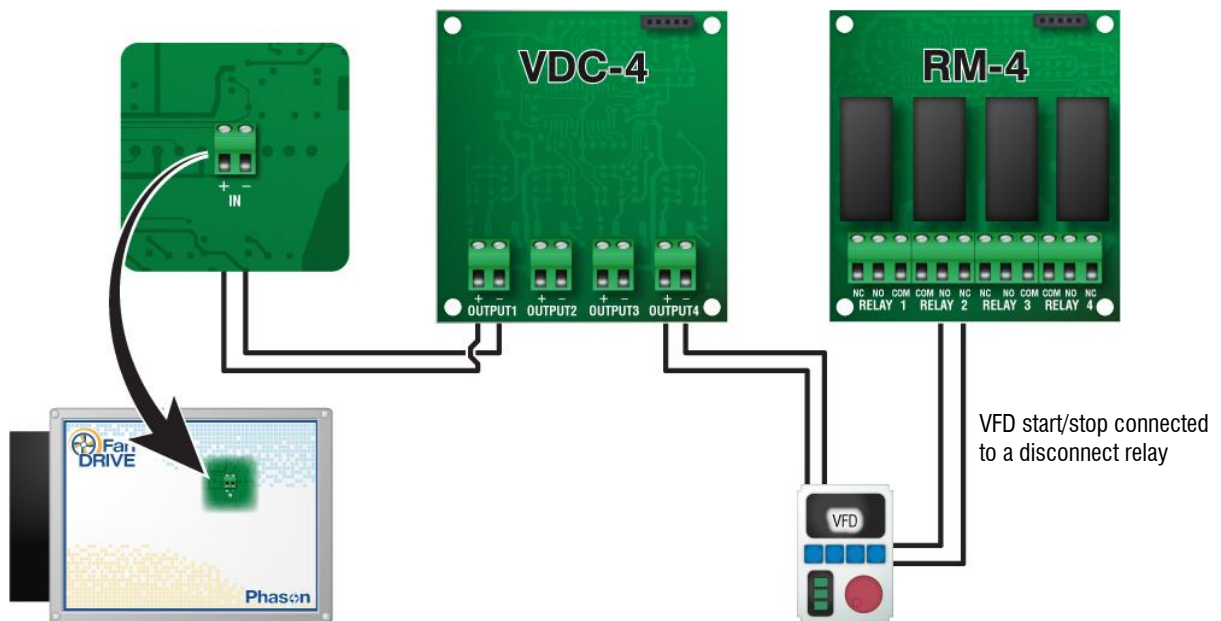
Relay Modules

Each Relay Module (**model RM-4**) module has four general-purpose relays for connecting fans, heaters, lights, sprinklers, or any other equipment that is either ON or OFF.



Variable DC Module

Each Variable DC Module (model VDC-4) has four 0 to 10 V outputs for controlling variable frequency drives (VFDs) or FanDRIVES.



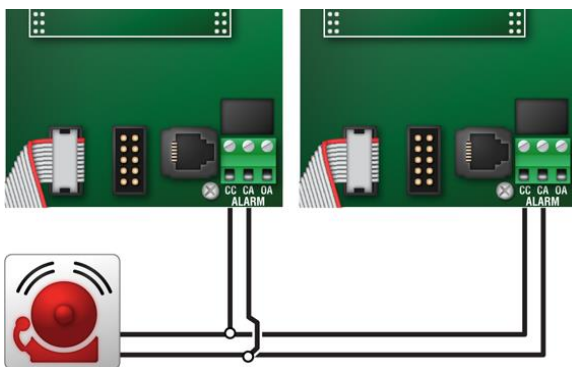
NOTE

The disconnect relay for the variable frequency drive is a relay on an RM-4 module. Configure the relay to follow the variable DC output. For more information, read the **Select Automation user manual**.

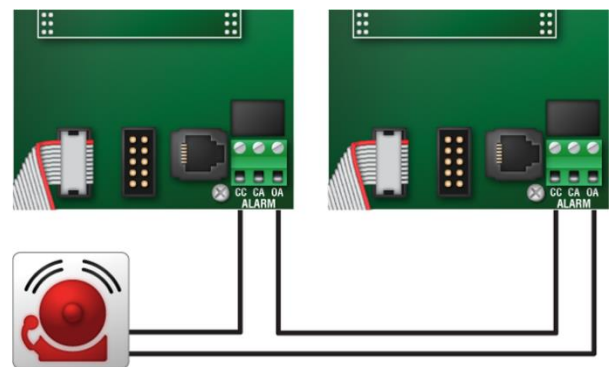
Alarm relay

Each AutoFlex control has an alarm relay connection on the inside of the cover.

Normally open alarm system



Normally closed alarm system

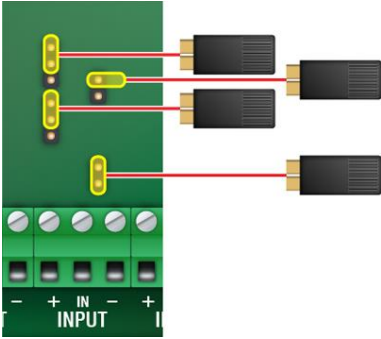


Input Module

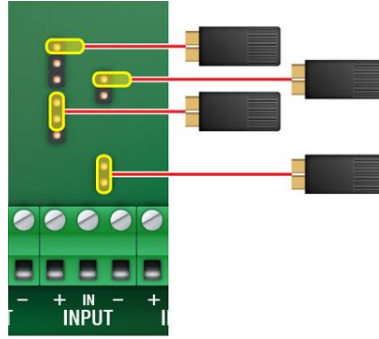
Each Input Module (model IN-4) has connections for four analog sensors of the following types.

Shunt positions for Phason sensors

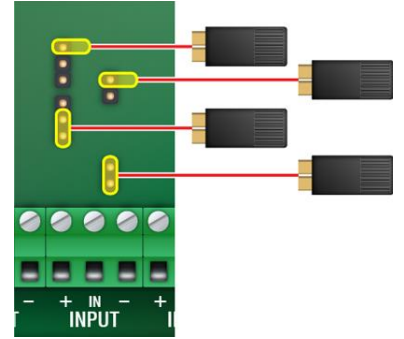
3K temperature probe
Phason Rain Sensor



Relative Humidity Sensor

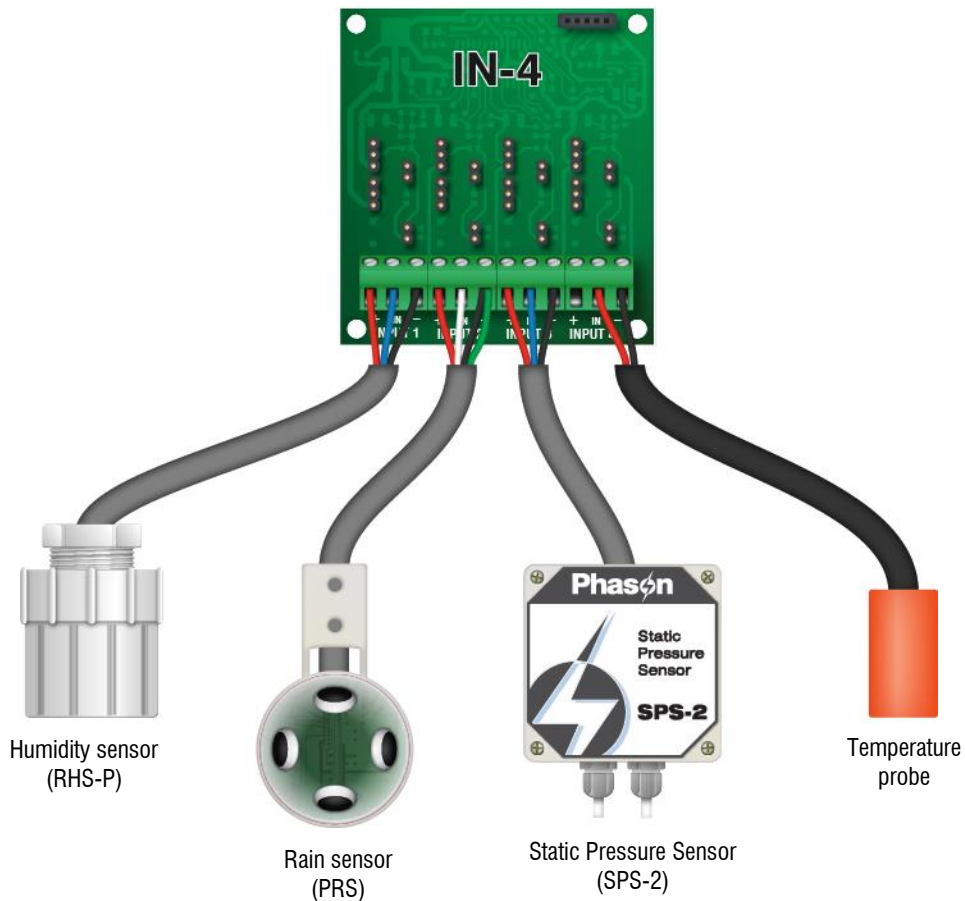


Static Pressure Sensor



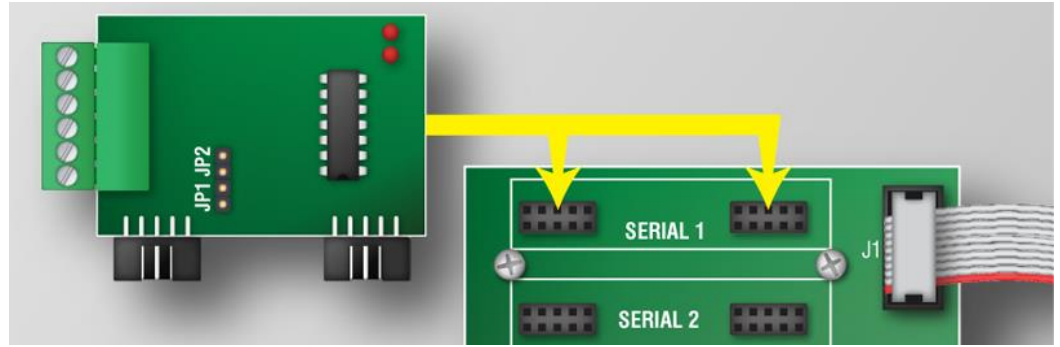
Wiring for Phason sensors

After placing the shunts in the proper positions, connect sensors as shown below. For additional information, read the installation guide for the specific sensor.



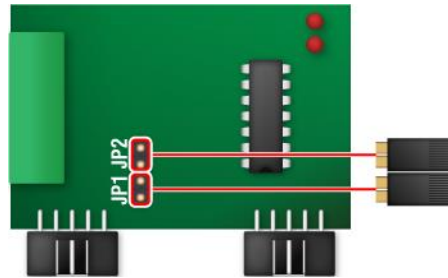
RS485 module

All communication wiring connects to the RS485 module. The RS485 Module plugs into the **SERIAL 1** connectors on the communication controller. The communication controller is on the inside cover of the AutoFlex and AutoFlex Mini.



Termination jumpers

The last device on the communication channel must have each termination shunt on both pins. All other devices on the communication channel must have the shunts on a single pin.



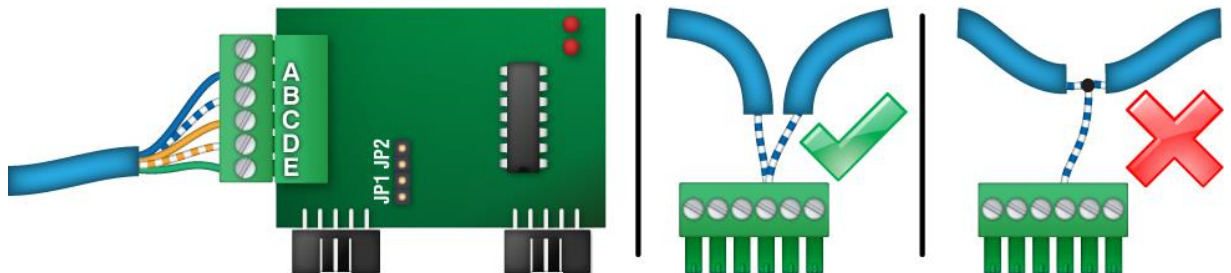
Place each termination shunt on a single pin for all devices on the communication channel, **except the last one.**

Place each termination shunt on both pins for the **last device** on the communication channel.

Communication wiring

Connect the communication wires to the **ABCDE** positions on the communication connector, **in the order shown**. **The order must be the same at each device.** When continuing from one device to the next, connect the two wires to each position in the connector; **do not use branches or T-connections.**

- A blue
- B blue/white
- C orange
- D orange/white
- E green



Phason Inc.
 2 Terracon Place
 Winnipeg, Manitoba, Canada
 R2J 4G7

Phone: 204-233-1400
 Fax: 204-233-3252

E-mail: support@phason.ca
 Web site: www.phason.ca